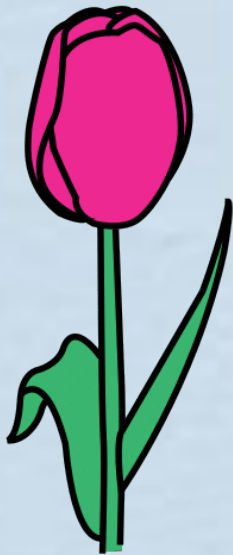


# LOS DIMINUTIVOS

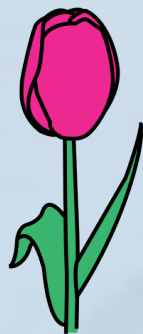


Los diminutivos son palabras que indican un tamaño más pequeño.

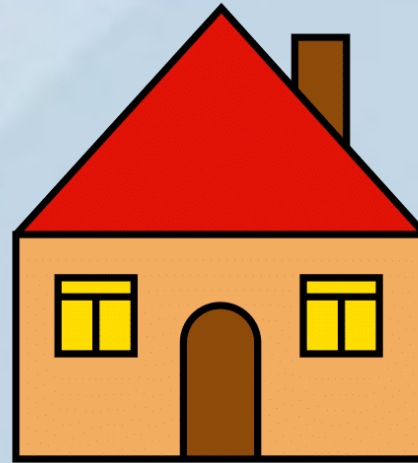
Se forman añadiendo a la palabra **-ito, -ita** o **-illo, -illa**



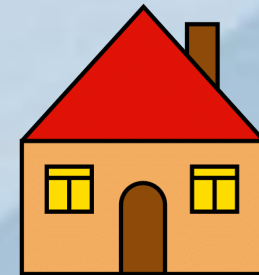
Flor



Flore**ci**ta  
Flore**ci**lla

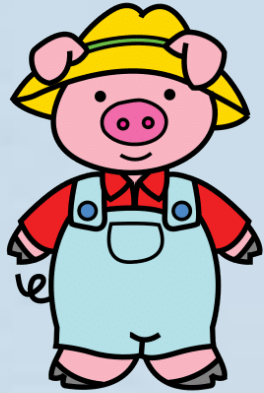


Casa



Cas**i**ta

# LOS DIMINUTIVOS



Cerdo



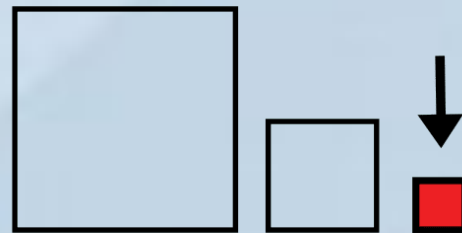
más pequeño



Cerdito



Lobo



más pequeño



Lobito